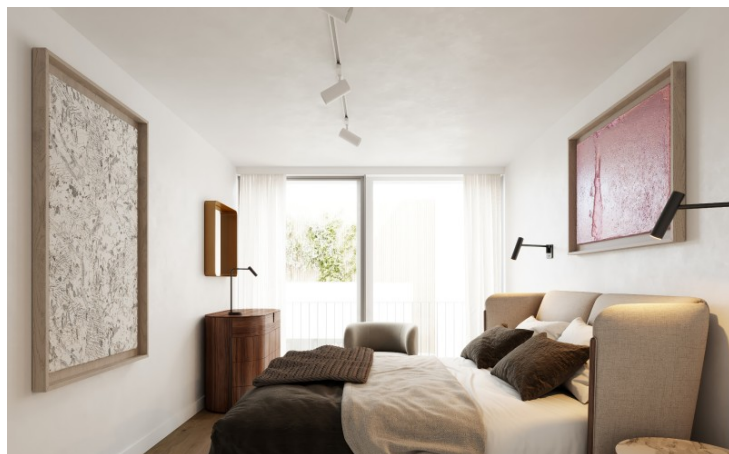


Quintinha 56 | Under Construction | Misericórdia, Lisboa





About

This contemporary five-story building comprises just three apartments, each designed to offer comfort, privacy, and a truly exclusive living experience.

Located in Príncipe Real, the development benefits from one of the capital's most emblematic neighborhoods, renowned for its sophisticated atmosphere, 19th-century mansions, and iconic gardens. It is a prestigious residential area, home to boutique hotels, award-winning restaurants, signature cafés, and local shops featuring concept stores, art galleries, and organic markets.

Characteristics

Status - Under Construction

Types - Apartments

Types - T2 to T3

Areas - 83m² to 183m²

Energy efficiency



Energy Rating is an index of thermal performance of a building, indicating the levels of heating and cooling in winter and summer buildings that achieve energy rating A or B are more comfortable to live in and have lower energy bills.

Units

Type	Floor	Typology	GPA	Price	Floor plan	Remax ID	Status
Apartment	R/C	T3	183.1 m ²	€2,100,000.00	Ver	120531405-223	Available
Apartment	2	T2	83 m ²	€880,000.00	Ver	120531405-218	Available
Apartment	3	T3	160 m ²	€1,800,000.00	Ver	120531405-224	Available